

IMT 14227 VANOWEN

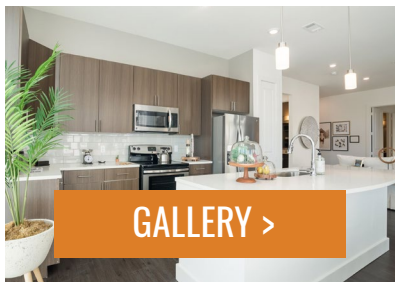


MAKE THIS HOME YOURS

Learn about our amenities, neighborhood and living elements that will make the perfect home for you:



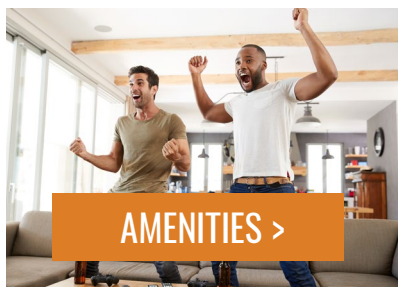
FLOOR PLANS >



GALLERY >



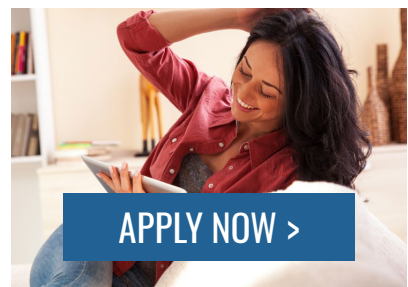
PET FRIENDLY >



AMENITIES >



NEIGHBORHOOD >



APPLY NOW >

IMT 14227 VANOWEN

📍 14227 Vanowen St • Van Nuys, CA 91405

Call/Text: 818.798.9561 • imt14227Vanowen.com



imt
RESIDENTIAL

COMMUNITY INFO

FEES

Application Fee: \$50

SECURITY DEPOSIT

One Bedroom: \$400

Two Bedroom: \$600

UTILITIES, ETC.

Renters Insurance: Required

Gas: SoCalGas

Electric: LADWP

Cable/Internet: AT&T

Trash Fee: \$13 per month

PETS

Pet Deposit (Refundable):
\$500 (Covers up to 2 pets)

Pet Rent: \$50 per pet, per month

Pet Information:
Two pets allowed per home;
no weight limit;
breed restrictions enforced.

Security deposit on approved credit only. Prices and fees are subject to change at any time without notice. Apartments cannot be reserved without application and app/admin payment.

MY IMT RESIDENT PORTAL

Live worry-free, knowing that we're committed to providing you the information and services you need to ensure your living experience exceeds your expectations.



ONLINE PORTAL

Login at Myimt.imtResidential.com



ON-SITE KIOSK

Digital touch-screen located
at the community



RENT PAYMENTS

Securely pay your rent online as a
one-time or recurring transaction with
your credit card or checking account.



SERVICE REQUESTS

Instantly notify us of any items in need of
attention and the service team will contact
you promptly to schedule an appointment.



AMENITY RESERVATIONS

Enjoy our amenities responsibly and
maintain social distancing by reserving
your spot with an amenity pass.



COMMUNITY POSTINGS

Easily post general announcements, items
for sale, or offered services to the entire
community for all your neighbors to see.

GET SOCIAL

FOLLOW US ON:



REVIEW US ON:



IMT 14227 VANOWEN

📍 14227 Vanowen St • Van Nuys, CA 91405

Call/Text: 818.798.9561 • imt14227Vanowen.com



imt
RESIDENTIAL