

# IMT 6500

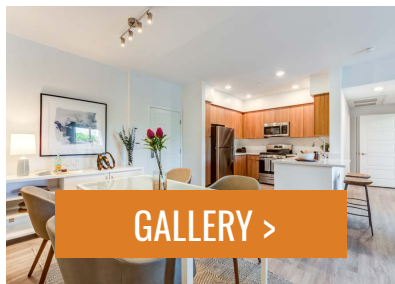


## MAKE THIS HOME YOURS

Learn about our amenities, neighborhood and living elements that will make the perfect home for you:



[FLOOR PLANS >](#)



[GALLERY >](#)



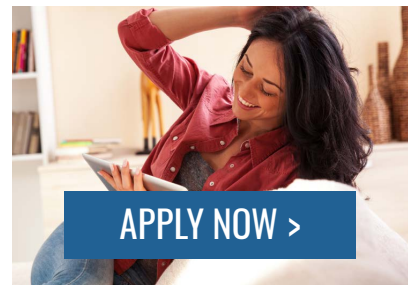
[SITE MAP >](#)



[AMENITIES >](#)



[NEIGHBORHOOD >](#)



[APPLY NOW >](#)

## IMT 6500

 6500 Sepulveda Blvd • Van Nuys, CA 91411

Call/Text: 818.814.9930 • [imt6500.com](http://imt6500.com)



**imt**  
RESIDENTIAL

# COMMUNITY INFO

## FEES

Application: \$55

## SECURITY DEPOSIT\*

One Bedroom: \$500

Two Bedroom: \$700

## UTILITIES, ETC.

Renters Insurance: Required

Water: LADWP

Electric: LADWP

Gas: SoCalGas

Trash: Varies

Package Lockers: \$5 per month

Credit Reporting: \$5 per month

## PETS

Pet Deposit (Refundable):  
\$500 per pet

Pet Rent: \$50 per pet, per month

Pet Policy:  
Two pets allowed per home;  
no weight limit;  
breed restrictions enforced.

\*Security deposit on approved credit only. Prices and fees are subject to change at any time without notice. Apartments cannot be reserved without application and app/admin payment.

## MY IMT RESIDENT PORTAL

Live worry-free, knowing that we're committed to providing you the information and services you need to ensure your living experience exceeds your expectations.



### ONLINE PORTAL

Login at [Myimt.imtResidential.com](http://Myimt.imtResidential.com)



### ON-SITE KIOSK

Digital touch-screen located  
at the community



### RENT PAYMENTS

Securely pay your rent online as a  
one-time or recurring transaction with  
your credit card or checking account.



### SERVICE REQUESTS

Instantly notify us of any items in need of  
attention and the service team will contact  
you promptly to schedule an appointment.



### AMENITY RESERVATIONS

Check out our community amenities  
and reserve your spot here.



### COMMUNITY POSTINGS

Easily post general announcements, items  
for sale, or offered services to the entire  
community for all your neighbors to see.

## GET SOCIAL

FOLLOW US ON:



REVIEW US ON:



## IMT 6500

📍 6500 Sepulveda Blvd • Van Nuys, CA 91411

Call/Text: 818.814.9930 • [imt6500.com](http://imt6500.com)



**imt**  
RESIDENTIAL