

# IMT WOODLAND MEADOWS

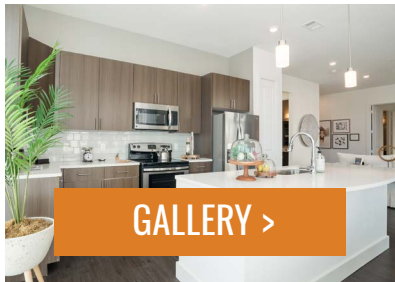


## MAKE THIS HOME YOURS

Learn about our amenities, neighborhood and living elements that will make the perfect home for you:



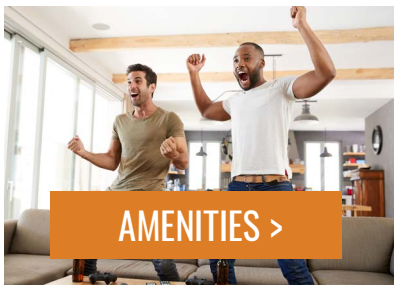
FLOOR PLANS >



GALLERY >



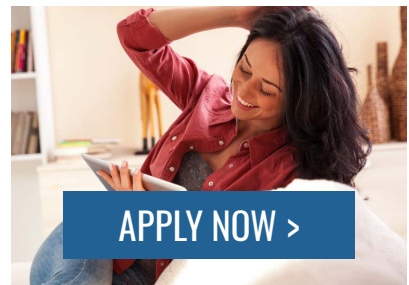
SITE MAP >



AMENITIES >



NEIGHBORHOOD >



APPLY NOW >

## IMT WOODLAND MEADOWS

📍 25335 Budde Rd • Spring, TX 77380

Call/Text: 281.378.7186 • [imtWoodlandMeadows.com](http://imtWoodlandMeadows.com)



**imt**  
RESIDENTIAL

## COMMUNITY INFO

### FEES

Application: \$50  
Administration: \$100

### SECURITY DEPOSIT\*

One Bedroom: \$200  
Two Bedroom: \$200  
Three Bedroom: \$200

### UTILITIES, ETC.

Renters Insurance: Required  
Electric: TXU Energy  
Trash: Varies  
Cable/Internet:  
Xfinity/Comcast/AT&T U-verse  
Pest Control: \$1 per month  
Package Lockers: \$5 per month  
Credit Reporting: \$5 per month

### PETS

Pet Fee (Non-Refundable):  
\$400 per pet  
Pet Rent: \$20 per pet, per month  
Pet Policy:  
Two pets allowed per home;  
no weight limit;  
breed restrictions enforced.

\*Security deposit on approved credit only. Prices and fees are subject to change at any time without notice. Apartments cannot be reserved without application and app/admin payment.

## MY IMT RESIDENT PORTAL

Live worry-free, knowing that we're committed to providing you the information and services you need to ensure your living experience exceeds your expectations.



#### ONLINE PORTAL

Login at [Myimt.imtResidential.com](http://Myimt.imtResidential.com)



#### ON-SITE KIOSK

Digital touch-screen located at the community



#### RENT PAYMENTS

Securely pay your rent online as a one-time or recurring transaction with your credit card or checking account.



#### SERVICE REQUESTS

Instantly notify us of any items in need of attention and the service team will contact you promptly to schedule an appointment.



#### AMENITY RESERVATIONS

Check out our community amenities and reserve your spot here.



#### COMMUNITY POSTINGS

Easily post general announcements, items for sale, or offered services to the entire community for all your neighbors to see.

## GET SOCIAL

FOLLOW US ON:



REVIEW US ON:



## IMT WOODLAND MEADOWS

📍 25335 Budde Rd • Spring, TX 77380

Call/Text: 281.378.7186 • [imtWoodlandMeadows.com](http://imtWoodlandMeadows.com)



**imt**  
RESIDENTIAL